

A man in a black t-shirt and dark pants is standing in a studio, adjusting a large, octagonal softbox light mounted on a stand. The light is glowing brightly. In the background, there is a white backdrop and some studio equipment. The overall scene is dimly lit, with the primary light source being the softbox.

STUDIO ASH

**A-304, Kotia Nirman, New Link Road, Above Apple Unicorn
Showroom, Near Fun Republic, Andheri West, Mumbai 400053**

TAP EACH IMAGE



Line Outline
Chapter 6 Convergence



Nisshk
House of Neeta Lulla

GALLERY



GQ India
Madboy Mink



ELLE Digi Cover Star
Nargis Fakhri



Lifestyle Asia
Lakshya



Rajvee Gandhi
Content Creator



Esho Maa
Music Album



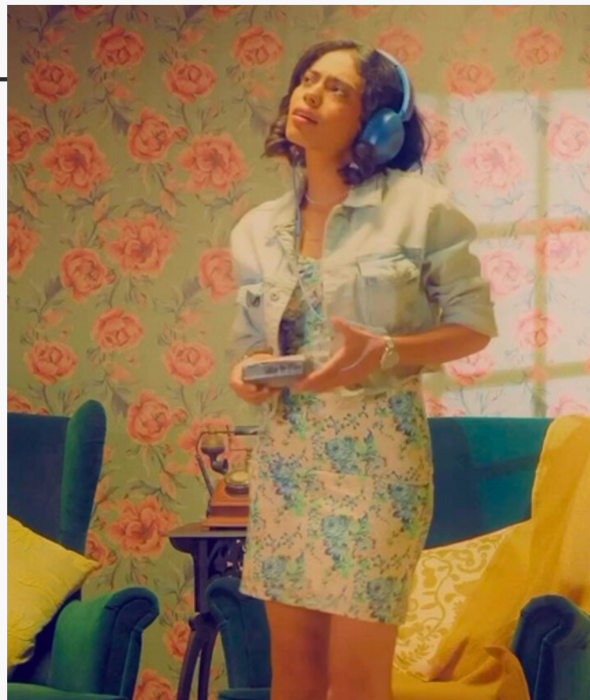
Music Album
Cover Shoot

TAP EACH IMAGE

TAP EACH IMAGE

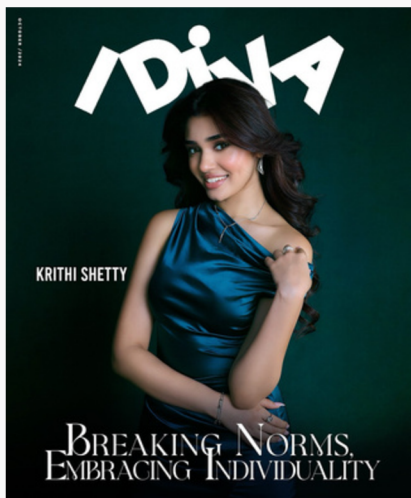


Sonam Bajwa
Ajio Ad Campaign



Gulaabi Rahi
Rono Music Album

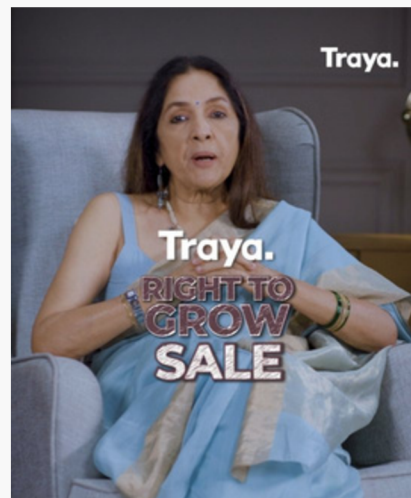
GALLERY



IDIVA
Krithi Shetty



Farah Khan Kunder
Ather Energy Ad



Neena Gupta
Traya Ad Campaign



Noorin Sha
Content Creator



Jannat & Faisal
Liberty Shoes Ad



Abhishek Malik
Patanjali Ad Campaign

TAP EACH IMAGE

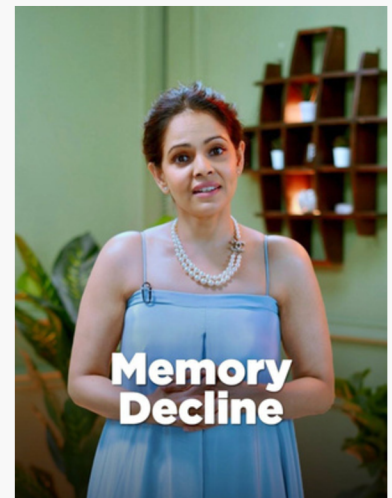


Aum Zingade & Shweta Tripathi
Witty & Wise Podcast

GALLERY



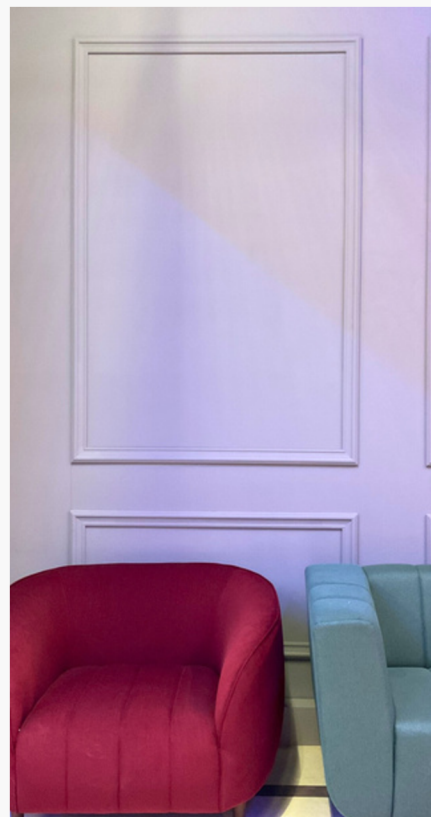
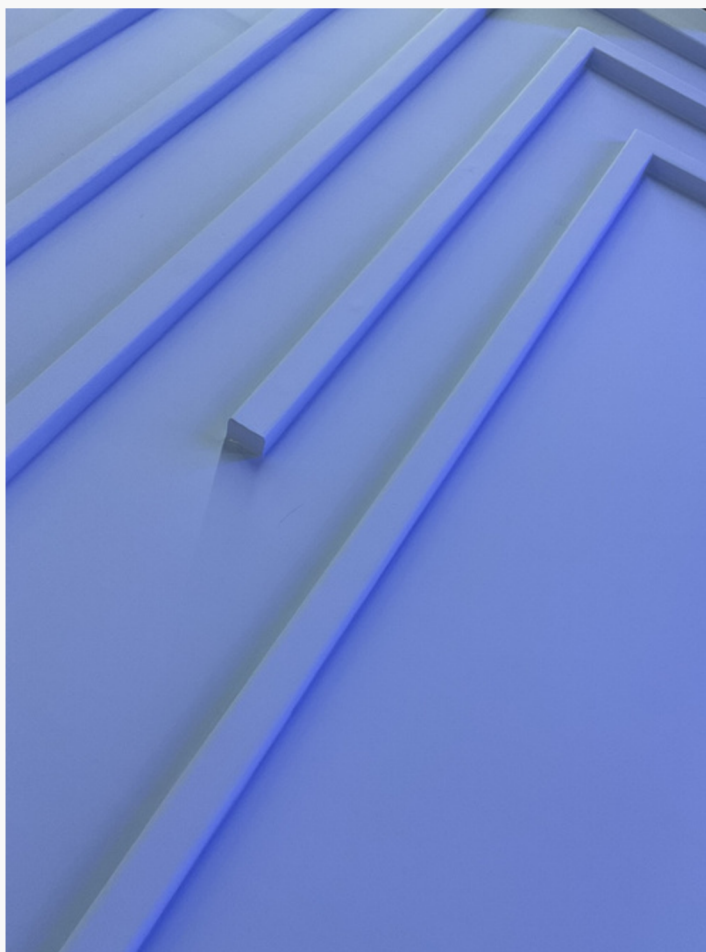
Ranveer Brar & Dr. Yogendra Singh Rathore
YSR Podcast



Namita Thapar
Emcure



Nikhil Taneja, Apoorva Mukhija, Dr Tanya Narendra, Renuka Shahane
Lets Talk Period Podcast by Whisper & Yuvaa Media



ABOUT US

We came in with a simple yet profound vision - to create a space where moments could be immortalized and memories could be crafted through the lens of creativity.

Driven by a passion for visual storytelling, Studio Ash's mission is to be a sanctuary for photographers, videographers, and storytellers to collaborate and bring their artistic visions to life. All while embracing cutting-edge technology and artistic innovation.

FLOOR PLAN



- **Total 3000 Sq Ft**
Open Space With
14Ft Height, No Pillars
- Shooting Space
Dimensions: **65Ft**
Length / 35Ft Width
- **3 Soundproof**
Openable Windows
For Natural Light

**All Furniture and
Equipments are
Modular And
Movable**

ENTRANCE

MEZZANINE LEVEL

AMENITIES



Separate Make Up Area & Changing Area With 3 Makeup & Hair Stations



Dining Area & Pantry



2 Washrooms with Modern Elegant Design



Multiple Props Like Lamps, Planters, Tables, Chairs, Artefacts, & Shelves Available



Natural Light Source Available



Fully Air Conditioned



100 Mbps High Speed Wifi



JBL Party Box Tower Speakers With Bluetooth – Model JBL Partybox 1000



2 Stand Fans Available



A Reserved Parking for Primary Booker



Indoor Vanity Lounge Available for Talent upon Request



Outdoor Vanity Van Parking Available upon Request



10-foot Textured and Colored Modular Walls – Nine colours



Whiteboard, Markers and other Basic Stationery



1 Fire Extinguisher



First Aid Kit

EQUIPMENTS INCLUDED



Elinchrom FRX400 **Photography Light** Kit x 2



Elinchrom Master RX **Photography Light** Kit x 2



Elinchrom FRX200 **Photography Light** Kit x 2



Elinchrom Deep Octa 100 CM **Softbox** x 1



Triple Height **C Stand** x 2



Arm Rod x 2



Heavy Duty Grip Head x 2



Steam Iron x 1



Clothing Racks x 2



Wardrobe hangers



Mannequins Available



Crew Chairs Available



Various kind of Cables & Extensions



Paper Roll Backgrounds



EQUIPMENTS ON RENT



Godox LITEMONS 300R Full-color LED **Video Light** x 2

Rent - ₹1200 per light per shift



Digitek Hand **Stick Video Light** with Barn Door x 1

Rent - ₹500 per shift



Digitek Wireless **Microphone** x 1

Rent - ₹500 per shift



Canon EOS 6D **Camera** Body

With Canon Zoom Lens EF 24-105mm x 1

Rent - ₹1500 per shift



500V **Smoke Machine** With LED x 1

Rent - ₹500 per shift



Superior Seamless **Green Chroma** Paper Backdrop x 1

Rent - ₹1200 per shift



Huge 8 feet by 5.5 feet **Vintage Mirror** x 1

Rent - ₹1500 per shift

CANCELLATION TERMS

- Cancellations made **less than 72 hours** before the shoot date are **non-refundable**.
- Cancellations made **more than 72 hours** before the shoot date will receive a **50% refund**.

Any shoot rescheduling or cancellations made on the day of the booking will be treated as a full cancellation and will be non-refundable.

RESCHEDULING TERMS

- For rescheduling **less than 72 hours** before the shoot date, the rescheduled shoot must occur **within 30 days** from the original date, subject to availability. If the rescheduled shoot is missed or canceled, no refunds will be issued, and the booking amount will be forfeited.
- Rescheduling **more than 72 hours** before the shoot date is **allowed once**, with the full amount adjusted toward the new booking date. Any additional rescheduling after this will not be eligible for a refund.

FOR BOOKINGS & ENQUIRY

CONTACT US

Phone Number

+91 77100 30800

Email Address

studio@cmcollective.net



Address

A-304, Kotia Nirman, New Link Road, Above Apple Unicorn Showroom, Near Fun Republic, Andheri West, Mumbai 400053

Website

www.studioash.in



@StudioAsh

Click here



@studioash.in

Click here

TERMS & CONDITIONS

1. The studio is available for hire 24/7.
2. The studio rent will start from the booking time declared by the client, not on the actual time once the shoot starts. Rental time 'ends' when the last person in the group walks out of the studio. Please keep in mind when planning your shoot.
3. The client is responsible in every way for whatever happens during the session, without regards to whosoever has damaged anything. The client will be responsible and will be charged for the damages done. This includes all the items in the studio space i.e. furniture, etc.
4. If the next client has reserved the studio, you are obliged to leave the studio when your decided time slot is over.
5. 20-30 minutes can be considered as a grace period only for pack up. However incase it crosses 30 minutes a full hour charge will be applied.
6. Do not step or lean on the walls & furniture. Walking with footwear on the backdrop is strictly prohibited.
7. Use of paint, flour, glitter or any other form of powder is strictly prohibited in the studio.
8. No fire, cooking and smoking inside the studio.
9. Chewing tobacco, smoking and spitting inside/outside the studio and on any studio property is fineable. A fine of Rs.10000 is levied by the studio which will be bourne by the client.
10. Please get the video lights properly tested with the power supply prior.
11. Nothing is allowed to be kept outside the studio, a fine of Rs.10000 is levied by the society which will be bourne by the client.



AGRA ARIA SETUP

The **Agra Aria Setup** exudes dreamy warmth with its **10-foot-high, 15-foot-wide** wall draped in **soft white lace curtains**. This ethereal backdrop creates a serene, elegant atmosphere inspired by Agra's timeless charm.



BENGALURU BLISS MOVABLE BACKDROP

The Bengaluru Bliss Movable Backdrop features a **10-feet-high, 15-feet-wide textured wall** in a striking **purple hue**. Inspired by the city's vibrant blend of creativity and innovation, this setup channels the bold, expressive energy of Bengaluru — perfect for shoots that demand a touch of artistic flair with modern sophistication.



CHENNAI CHARM MOVABLE BACKDROP

The Chennai Charm Movable Backdrop features a **10-feet-high, 15-feet-wide door wall** in a serene **coastal blue**, evoking the calm and culture of Chennai. Paired with a **matching window wall**, this setup brings timeless elegance and breezy sophistication to your frame — perfect for creating soft, classic visuals with character.



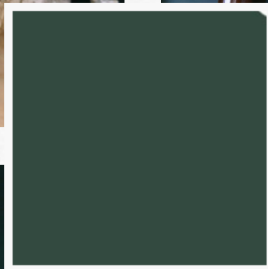
CHENNAI CHARM MOVABLE BACKDROP

The Chennai Charm Movable Backdrop features a **10-feet-high, 15-feet-wide window wall** in a serene **coastal blue**, evoking the calm and culture of Chennai. Paired with a **matching door wall**, this setup brings timeless elegance and breezy sophistication to your frame — perfect for creating soft, classic visuals with character.



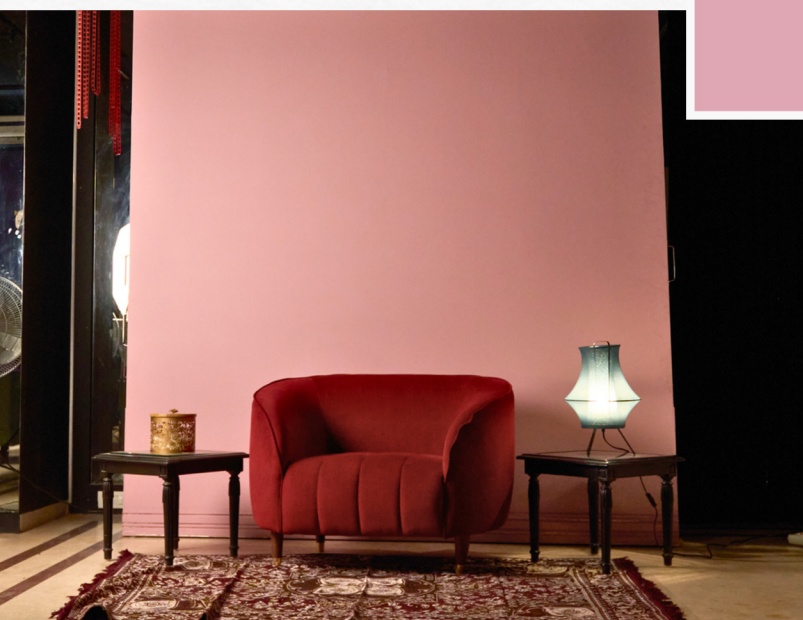
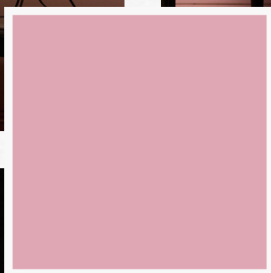
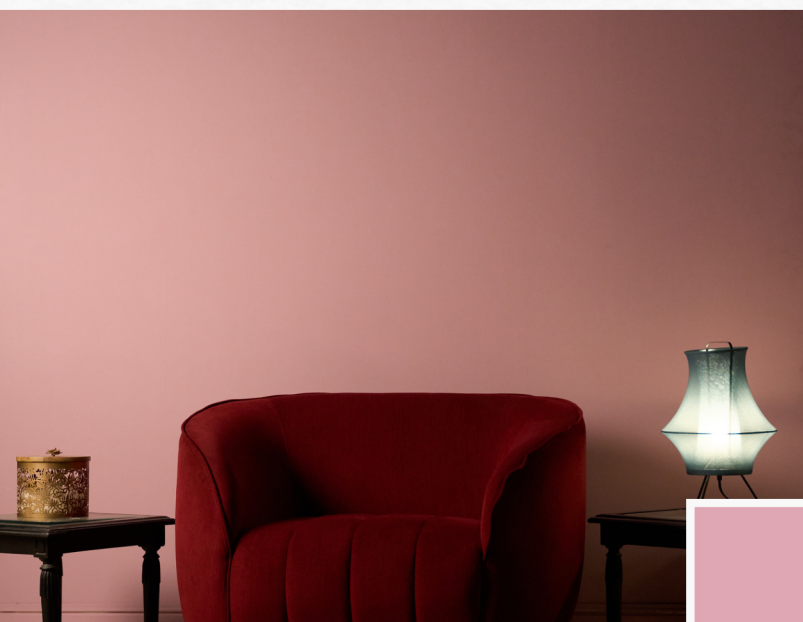
COORG CANOPY SET-UP

The Coorg Canopy Setup features a striking **10-feet-high, 15-feet-wide wall** in a **deep green** shade. Inspired by the lush coffee plantations of Coorg, this backdrop brings a refreshing, earthy richness to your frame—perfect for visuals that need depth, calm, and a touch of natural luxury.



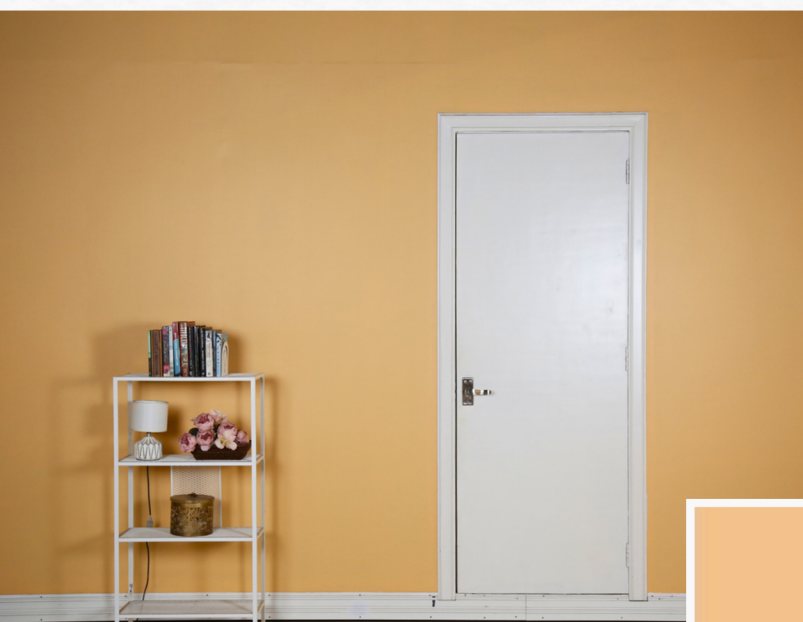
DALHOUSIE DREAM MOVABLE BACKDROP

The Dalhousie Dream Movable Backdrop features an **8-feet-high, 10-feet-wide** setup in a **soft pink hue**. Inspired by the serene beauty of Dalhousie, this backdrop brings a gentle, dreamy ambiance to any space.



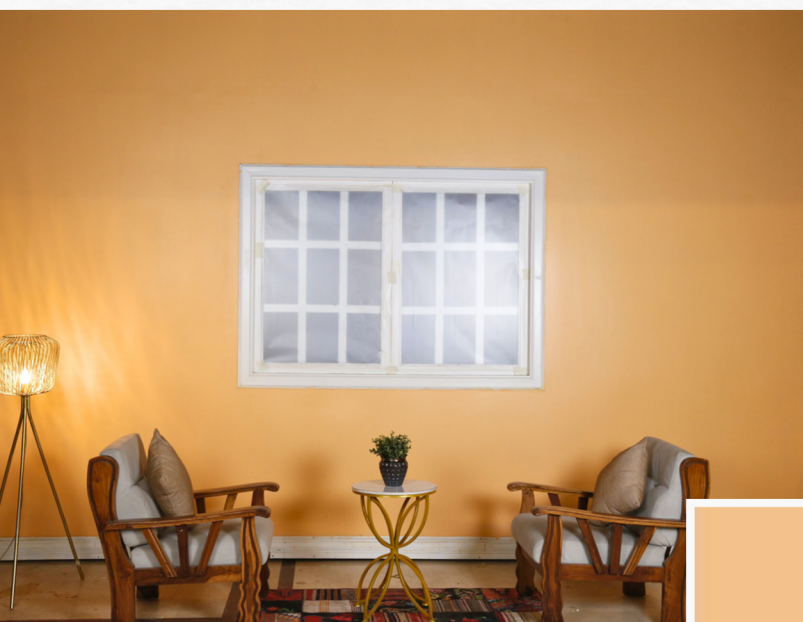
GOA GROOVE MOVABLE BACKDROP

The Goa Groove Movable Backdrop features a **10-feet-high, 15-feet-wide peach-toned door wall**, radiating coastal charm and laid-back elegance. Paired with a **matching window wall**, it captures the soft, playful spirit of Goa—perfect for breezy, sun-kissed setups that exude warmth, joy, and effortless style.



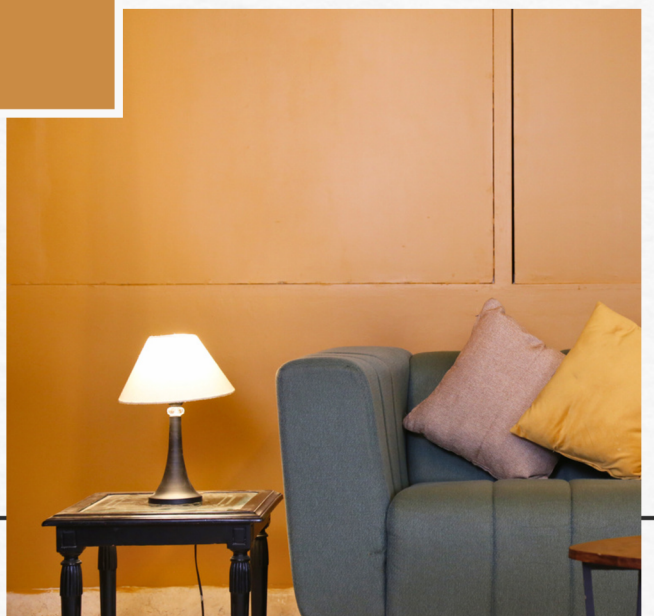
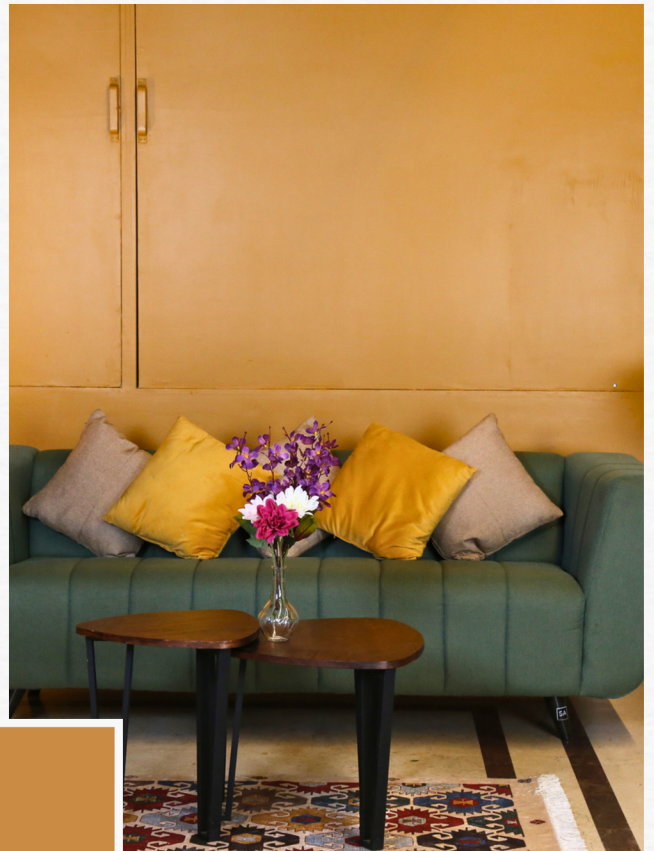
GOA GROOVE MOVABLE BACKDROP

The Goa Groove Movable Backdrop features a **10-feet-high, 15-feet-wide peach-toned window wall**, radiating coastal charm and laid-back elegance. Paired with a **matching door wall**, it captures the soft, playful spirit of Goa—perfect for breezy, sun-kissed setups that exude warmth, joy, and effortless style.



KUTCH KARMA SET-UP

The Kutch Karma Setup features a **10-foot-high, 15-foot-wide wall** in a radiant **yellow ochre**. Evoking the golden warmth of Kutch's deserts and artisanal charm, this backdrop brings a sunlit, earthy elegance to every frame—perfect for shoots that seek vibrance, tradition, and a touch of cultural soul.



LUCKNOW LEGACY SET-UP

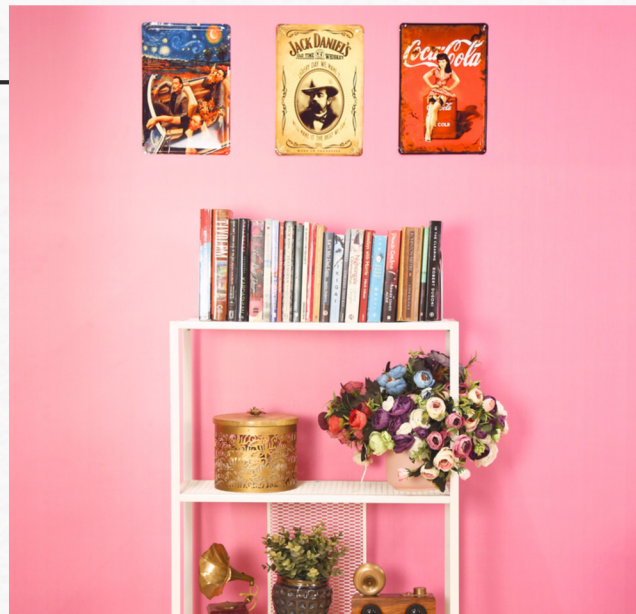
The Lucknow Legacy Wall features a rich **maroon, 10-feet-high, 15-feet-wide textured backdrop** that exudes Nawabi grandeur.

Paired with a **10-feet-high, 7-feet-wide movable wall** in the same hue, this setup adds a regal charm, making it perfect for shoots that demand elegance, tradition, and a touch of royal drama.



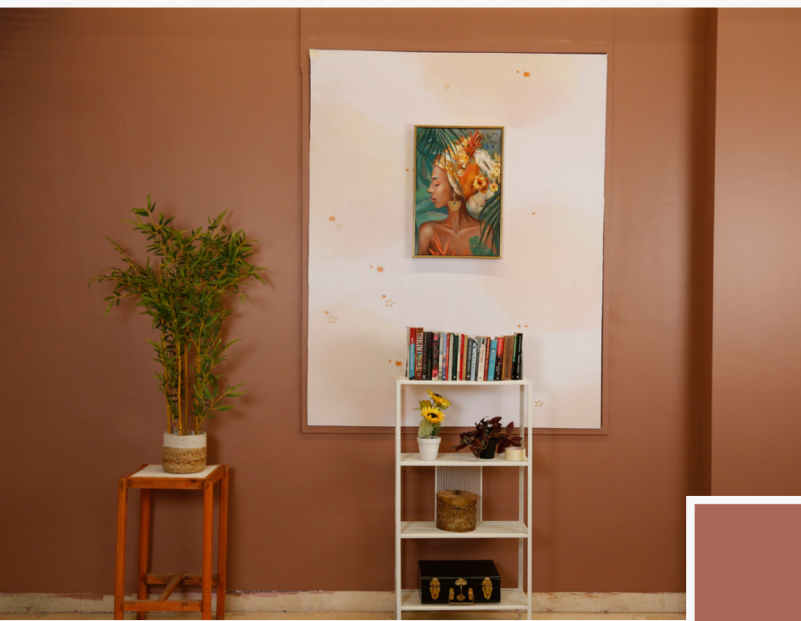
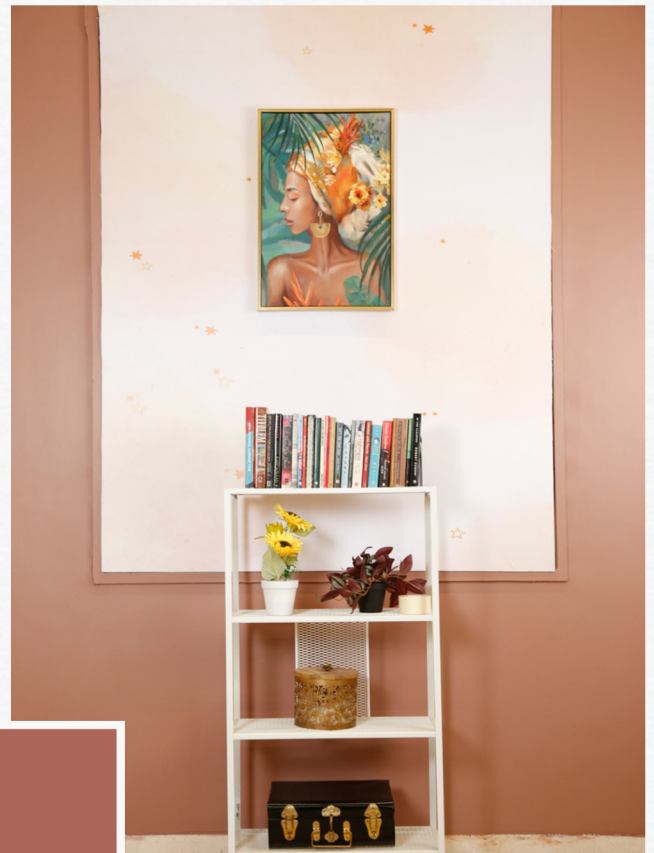
MANALI MUSE MOVABLE BACKDROP

The Manali Muse Movable Backdrop features a striking **10-feet-high, 15-foot-wide plain wall** in a vibrant **Barbie pink**. Designed to capture the playful, youthful charm of Manali, this setup adds a bold pop of color that's perfect for shoots that crave energy, freshness, and a touch of whimsy.



MADRAS MOCHA SET-UP

The Madras Mocha Setup features a **10-foot-high, 15-foot-wide wall** in a rich **earthy brown**, exuding warmth and depth. Inspired by the comforting aroma of South Indian filter coffee, this setup brings a grounded, inviting charm—perfect for shoots that call for a touch of rustic elegance and soulful simplicity.



MYSORE MIST SET-UP

The Mysore Mist Setup features a **10-foot-high, 15-foot-wide wall** in a soft **blush beige shade**. Inspired by the timeless elegance of Mysore, this setup blends tradition with minimalism—creating a serene, understated backdrop that exudes quiet luxury and warmth for your shoots and studio moments.



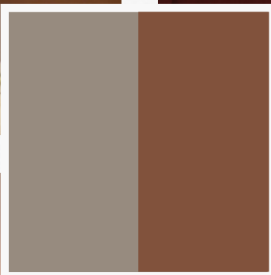
MUMBAI MIDNIGHT SETUP

The Mumbai Midnight Setup features a **10-foot-high, 15-foot-wide mirror wall** draped in elegant **black lace curtains**. Inspired by the mystique of Mumbai's nightlife, this setup adds depth and a touch of intrigue to any space.



PONDICHERRY PLUSH SET-UP

The Pondicherry Plush Setup features a **10-feet-high, 5-feet-wide frame** that blends **earth brown tones with luxurious grey curtains**, offering a rich yet cozy backdrop. Perfect for solo podcast shoots, it captures the warm, elegant vibe of coastal Pondicherry—where French charm meets Indian soul in a plush visual palette.



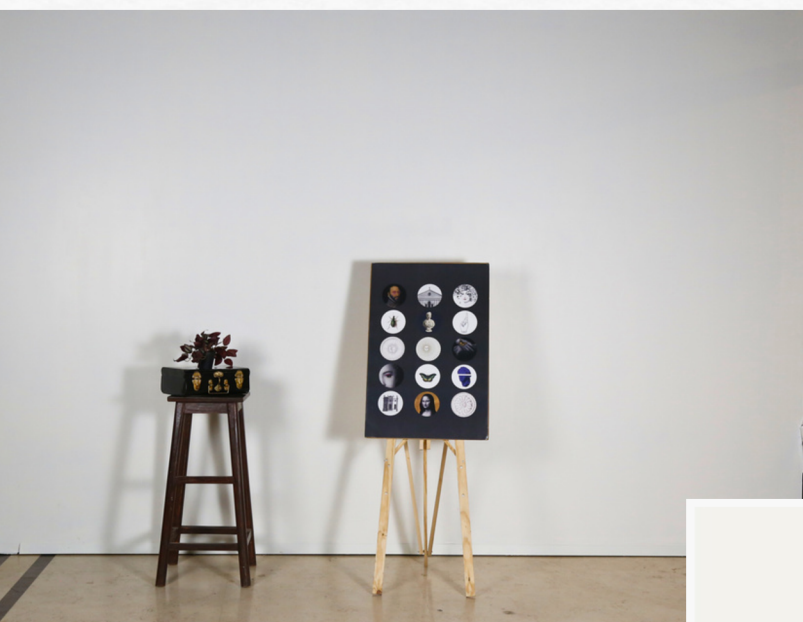
PUNE PEARL SET-UP

The Pune Pearl Setup features a **10-foot-high, 15-foot-wide wall** draped in **luxurious grey curtains**. Inspired by the refined charm of Pune, this setup blends subtle sophistication with a modern edge—perfect for clean, minimalist aesthetics with a touch of elegance. A timeless backdrop for your most polished visuals.



SHIMLA SOLACE MOVABLE BACKDROP

The Shimla Solace Movable Backdrop stands **10-feet high** and **15-feet wide**, finished in a serene **white tone**. True to its name, it evokes tranquility, minimalism, and light-filled elegance—perfect for creating calm, airy visuals that feel both sophisticated and peaceful. A clean slate that lets your story shine.



UDAIPUR UTOPIA MOVABLE BACKDROP

The Udaipur Utopia Movable Backdrop features a **10-feet-high, 15-feet-wide textured** surface in a tranquil **light blue**. Inspired by the serene lakes and regal skies of Udaipur, this setup evokes a dreamy, royal charm—perfect for adding elegance and calm to any visual frame.



VARANASI VISTA SET-UP

The Varanasi Vista Wall features a **10-foot-high, 15-foot-wide textured design** in a serene **beige-grey tone**, inspired by the timeless beauty of Varanasi. Complete the set with a matching **10-foot-high, 7-foot-wide movable wall** for a harmonious, tranquil ambiance.



STUDIO ASH GREEN ROOM

The Studio Ash **Green Room** offers a **fully equipped space** with **3 Hollywood-style makeup stations**, **2 private changing rooms**, and **an artist washroom**. Designed for comfort and functionality, this setup ensures a seamless experience for every artist.



STUDIO ASH VANITY LOUNGE

The Studio Ash **Vanity Lounge** Area features **cozy sofas** and **a TV unit**, providing a **relaxed, comfortable space** ideal for unwinding or **hosting meetings**. Designed with style and convenience, it's perfect for recharging or discussing plans in a sophisticated setting.



STUDIO RULES

1. All visitors please sign in to reception.
2. In this studio we respect each other and the space
3. Absolutely no nails or pins in the walls or backdrops. You must use putty, command hooks or gentle tape if you need to hang items. You are 100% liable for any damages to the studio and/or its components during your session.
4. Report any damages, repairs or maintenance needed immediately to management. If it is not reported by the following person, you may be held responsible for the damages.
5. Do not drag props and furniture across the floors. Pick them up and move them properly to avoid damaging the studio. Return all items to their original location when finished.
6. Our staff will visit your studio room within 10 minutes prior to the end of your booking to ensure that the room is left in its original condition.
7. Our studios cannot be used to shoot pornographic content.
8. Liquor of any sort is not permitted to be consumed on the premises. If a member of your party comes to the studio intoxicated, we reserve the right to ask them to leave the premises.
9. Please leave all food and water bottles in their designated areas.
10. Have fun!